



CorPatch[®]

Quick Start Guide

English

V1.2 2024.04

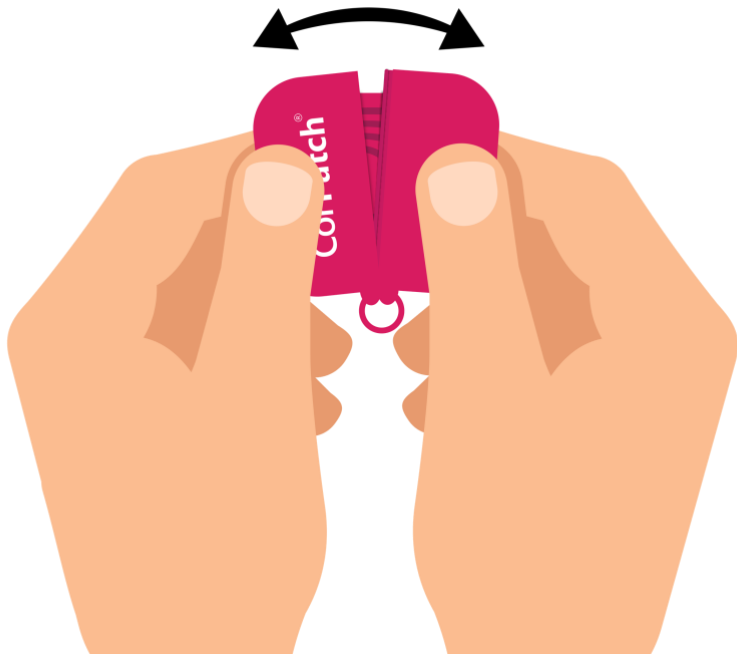
CorPatch[®] Version A11

We thank you for joining our vision to save lives and increase survival rates through high-quality Cardiopulmonary Resuscitation (CPR) in case of cardiac arrest.

To be optimally prepared in case of an emergency, please go through every step explained in this Quick Start Guide before using your new CorPatch®.

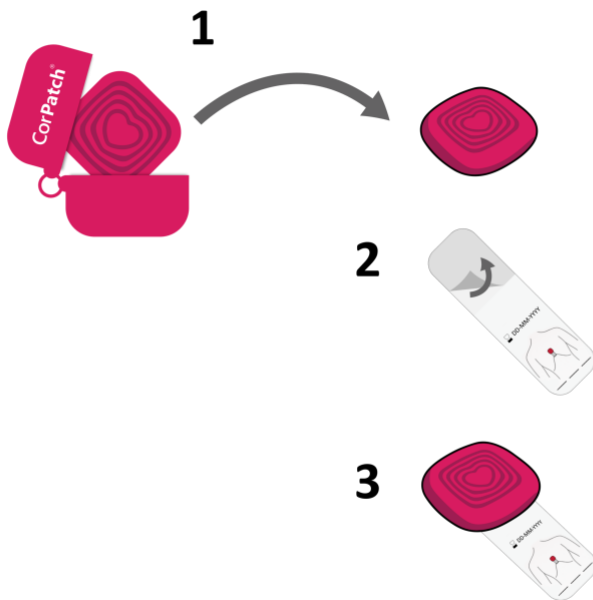
Take your CorPatch® out of its enclosure

Open the enclosure by pressing your index fingers a bit against its backside and pulling the two halves apart.



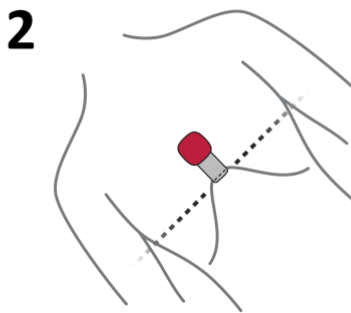
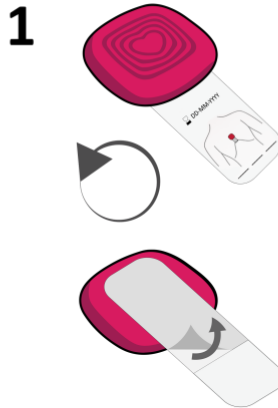
Setup your CorPatch®

To make sure that your CorPatch® will stick tightly to the chest of the person in a cardiac arrest, you must position the Adhesive Patch on your CorPatch® as shown below.



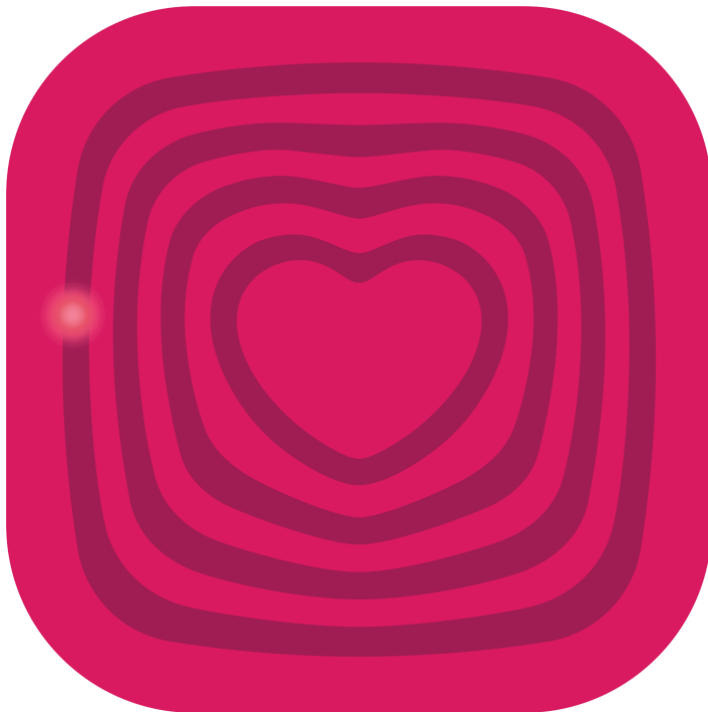
Use of the adhesive in emergency

In case of an emergency, the Adhesive Patch will be applied to the person's chest as shown below. (also see [Place your CorPatch®](#))



Wake up your CorPatch®

After unboxing, you must activate your CorPatch®. When you briefly press on the centre of your CorPatch®, a red light appears. Please press and hold your CorPatch® for a few seconds until the light starts flashing and turning off.



Download the CorPatch® App

Before you can use your CorPatch® for training CPR or during an actual cardiac arrest, you should download the CorPatch® app using either of these QR codes.



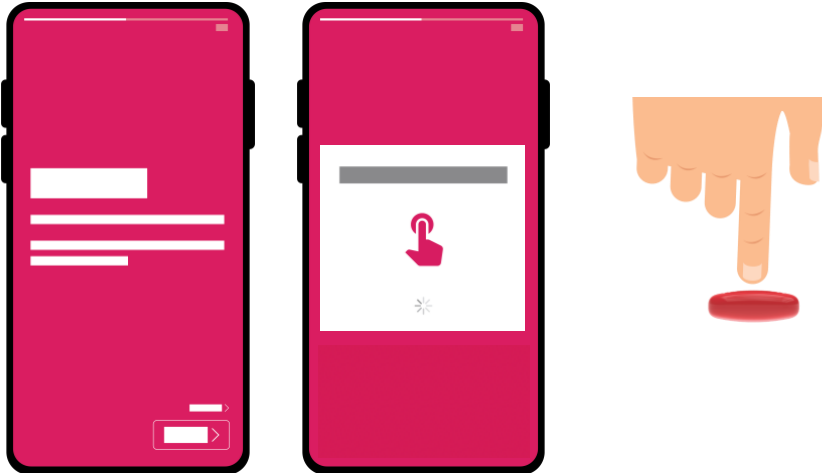
[Google Play Store](#)



[Apple App Store](#)

Connect your CorPatch®

Now that you have signed up and logged into the CorPatch® app, you will be asked to connect with your CorPatch®. When prompted to do so, briefly press the centre of your CorPatch® until you hear a click. Release the pressure. Your CorPatch® will connect automatically.



Start training with CorPatch®

It is very easy to train and improve your CPR skills with CorPatch®, just tap on **START TRAINING** (shown by arrow). The blue app banner indicates the Training Mode for you.



Results of Training

The **depth** says how many of your compressions were in the range of 5-6 cm.

Frequency says how many of your compressions were within 100-120 compressions per minute. **Recoil** says how many of your compressions had a full recoil. **Flow** indicates the elapsed time you made compressions without any breaks.



Storing your CorPatch®

To store your CorPatch® after training, put it back in its enclosure with the adhesive folded around as shown.



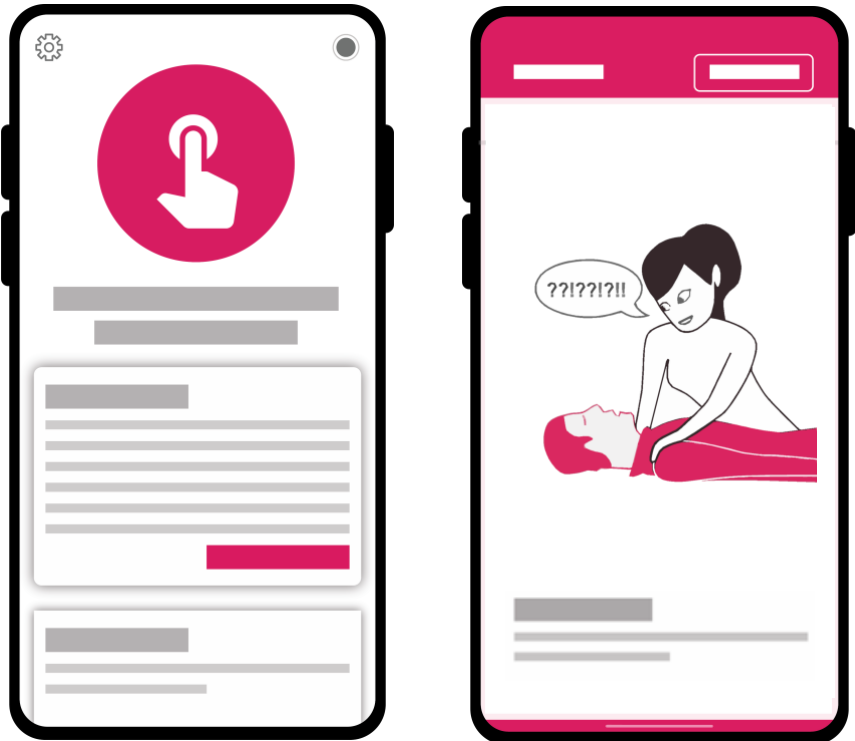


CorPatch[®]

CorPatch[®] guides you in emergency

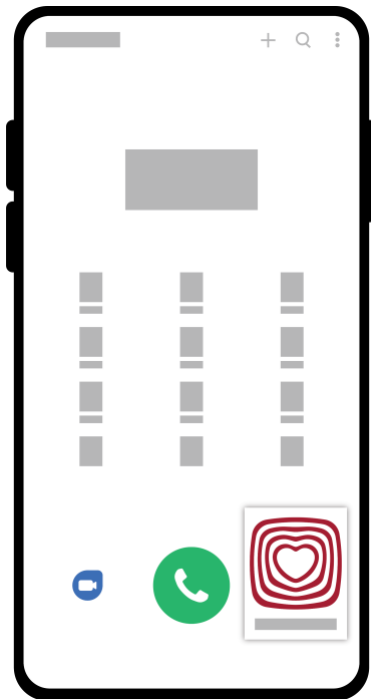
Open App and enter Emergency Mode

In case you witness a cardiac arrest, open the CorPatch® app immediately and tap the emergency button three times quickly. The red app banner indicates the Emergency Mode for you.



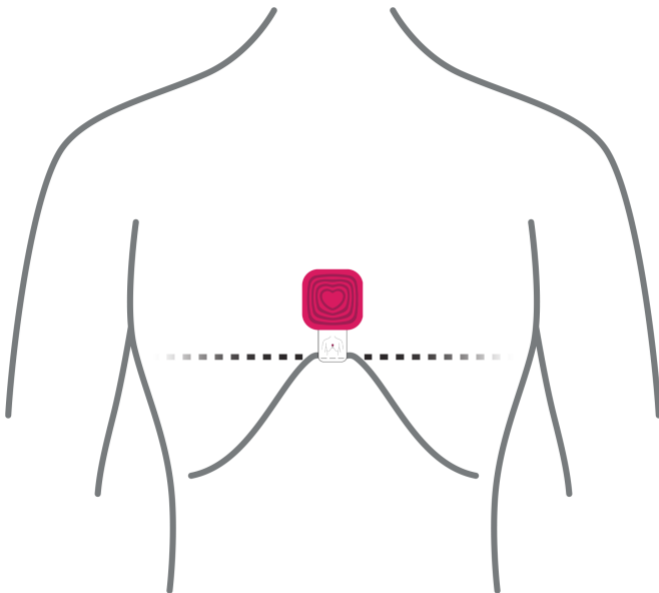
Go through Basic Life Support Routine

The CorPatch® app will guide you to check the person's consciousness and breathing. The app also helps you to execute the emergency call. If another bystander is present, ask them to call an ambulance and find an AED.



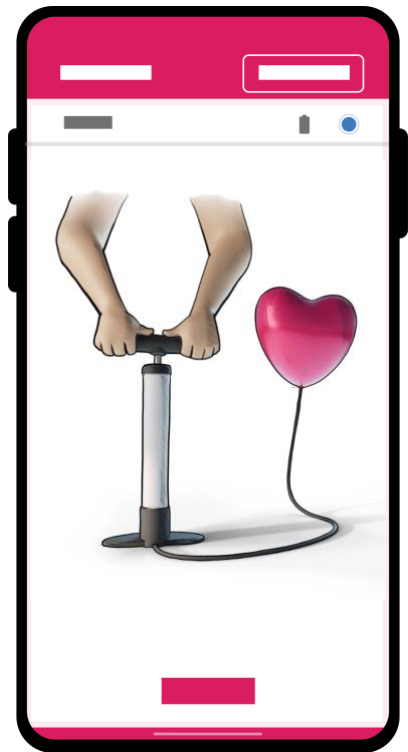
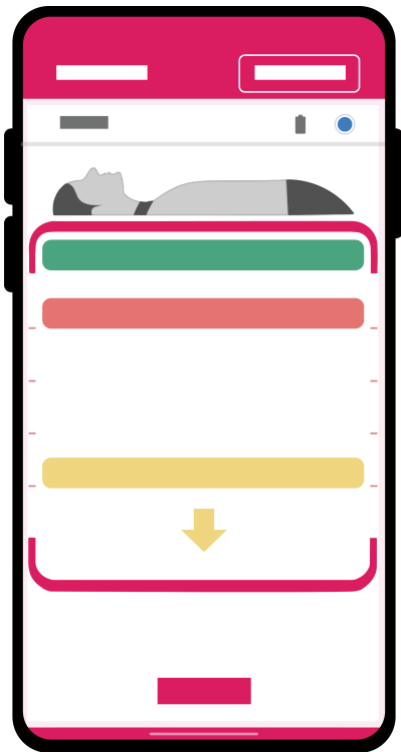
Place your CorPatch®

Remove clothing from the person's chest. Open your CorPatch® key-hanger, remove the protective liner from the Adhesive Patch and use the positioning aid to place it correctly onto the chest.



Begin CPR

The CorPatch[®] app will advise you on giving chest compressions (and rescue breaths).



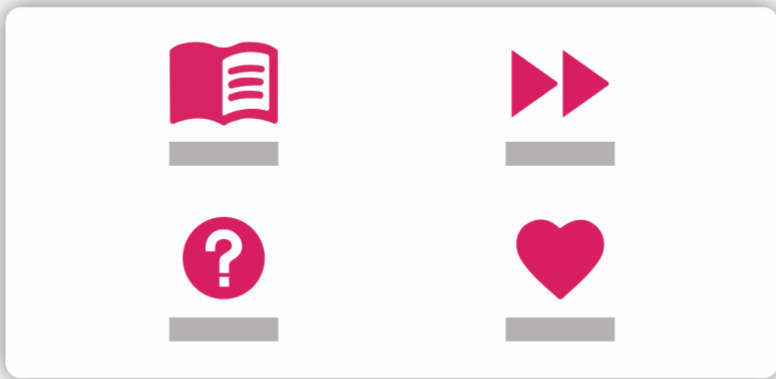
Continue until the ambulance arrives

Continue with performing CPR until an ambulance or AED arrives. Give compressions when the AED is not analyzing or giving shocks.



Get more information

To get more information about how to use and individualize your CorPatch[®] system, please have a look in the Manual. We also prepared a FAQ and First Aid Compendium to help you improving your knowledge about Cardiac Arrest and First Aid.





Please be sure to read and follow the warnings regarding medical emergency situations identified in the Manual.

© 2023 SmartResQ ApS. All rights reserved.

The Bluetooth® word mark and logos are registered trademarks owned by Bluetooth SIG, Inc. and are used under license. IOS is a registered trademark and is used under license. Designed by SmartResQ.